

# TMA IoT Center



**15** years  
of experience



Customers from  
**10** countries



**400+**  
engineers



**20+**  
products



**50+**  
projects



## Why TMA

End-to-end services:  
Testing | Deployment |  
Customer support

Experienced with  
latest embedded  
technology

Partnership with  
large embedded  
tech firm

Strong foundation,  
easy to scale

Flexible project  
model on choice:  
ODC | Fixed price |  
TaaS



## Development Model



### Full-cycle IoT Development

Transform your idea into ready solution with our end-to-end software development services



### IoT Integrations

Ensuring software platform is compatible with existing infrastructure and legacy equipment



### IoT Acceleration

Use our IoT accelerator to manage device connectivity based on predefined scenarios



### User App Development

Manage devices' data with native mobile and web applications powered by an intelligent UX

## Technologies

Programming	Edge computing, C/C++, Python, Java
OS	Android, RTOS, Yocto, Windows IoT Core, Linux, Raspberry Pi OS
IoT platform	AWS IoT, Google Cloud IoT, Azure IoT Hub, Sierra Wireless Legato/Octave, Thingsboard
Communication	2G/3G/4G/NB-IoT/5G, Bluetooth/BLE, Wifi, LoRa/LoRaWAN, Modbus, CAN, LIDAR, SLAM, MQTT, CoAP, LWM2M, AMQP
Hardware	Arduino, ESP, NVIDIA Jetson, Google Coral, Raspberry Pi, Google Coral, Xilinx, Sierra Wireless FX30, STM/ ARM/ AVR/ TI
Devices	Mobile, sensor, GPS, light therapy device, Beacon, electronic plug ARM, Ar7240, RT-Linux, Android





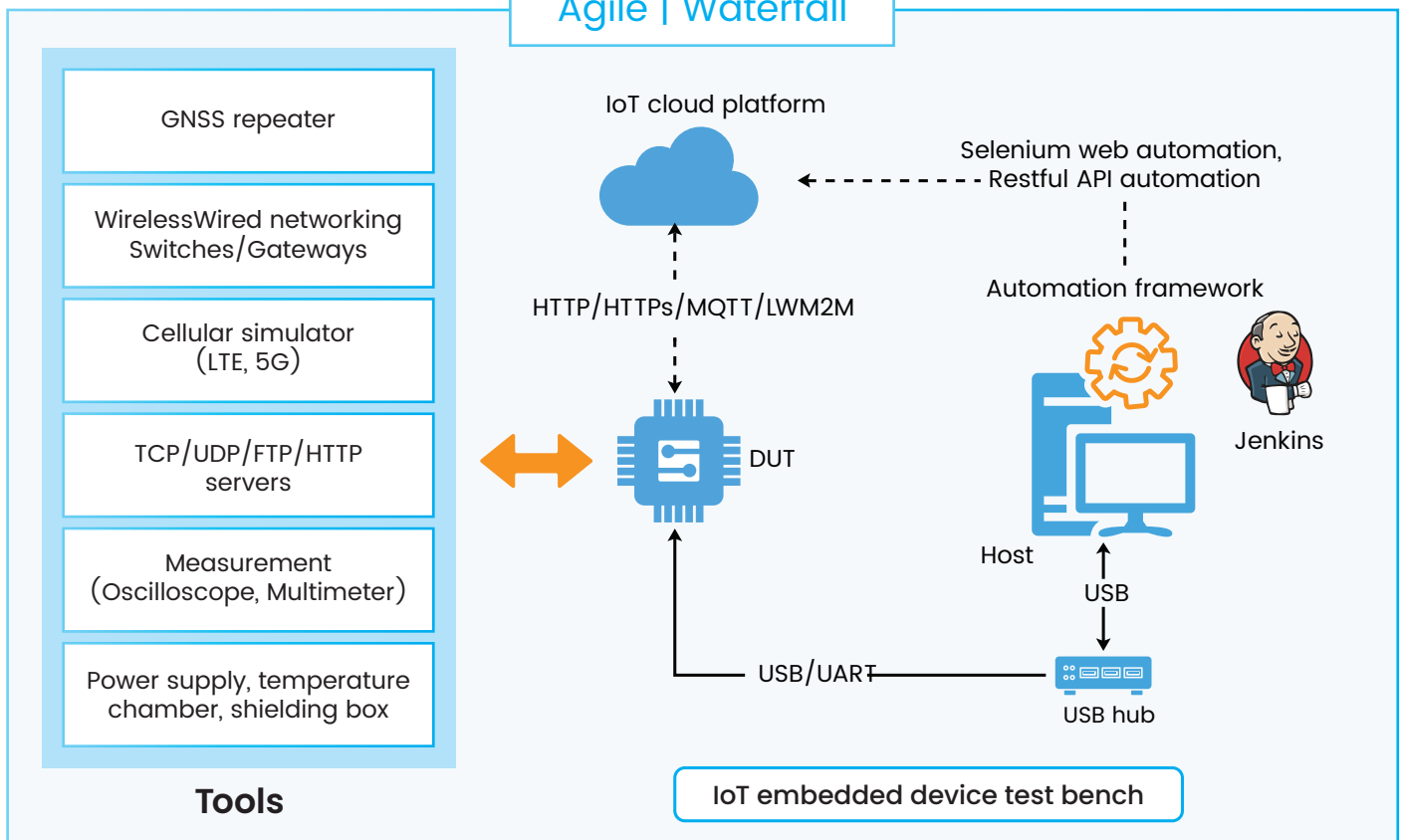
# IoT Testing

## ■ What we offer?

Verification and validation for firmware and applications running on IoT embedded modules (2G/3G/4G/5G cellular, WIFI, Bluetooth, GNSS) with automation level > 70%

## Development Model

Agile | Waterfall



## Black-box test type

- Black-box test type: functional, performance, stress test, end-to-end testing.

## Application Testing

- C/C++ API testing

## Firmware Testing

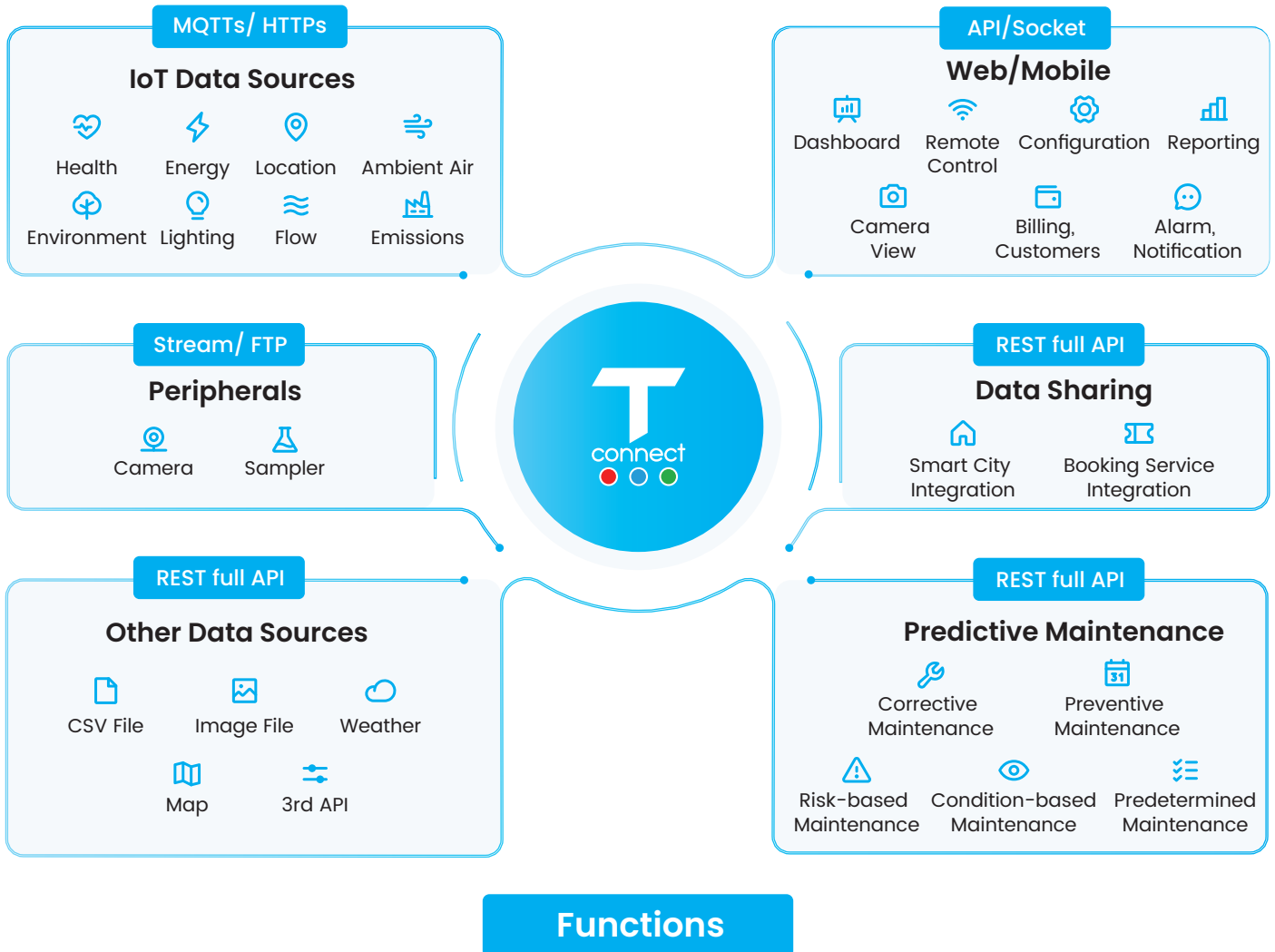
- Testing for AT commands based on ITU V.25 ter, 3GPP specifications and manufacturer's specifications.
- IoT cloud interaction testing: device management, firmware-over-the-air (FOTA), software-over-the-air (SOTA).





# T-Connect

**T-Connect** is an **IoT platform** that helps customers build an IoT project quickly, based on existing hardware, connectivity, and functionalities.



## Equipment management

Data collection, real-time device controlling

## Responsive dashboards

Customize the dashboard interface according to the needs of the project

## Rule setting

Easily set rules, thresholds and schedules

## Integrated cameras

An integrated variety of IP/WIFI cameras

## Integrated multiple alarm channels

Integrated alerts via SMS, call, Skype, Zalo

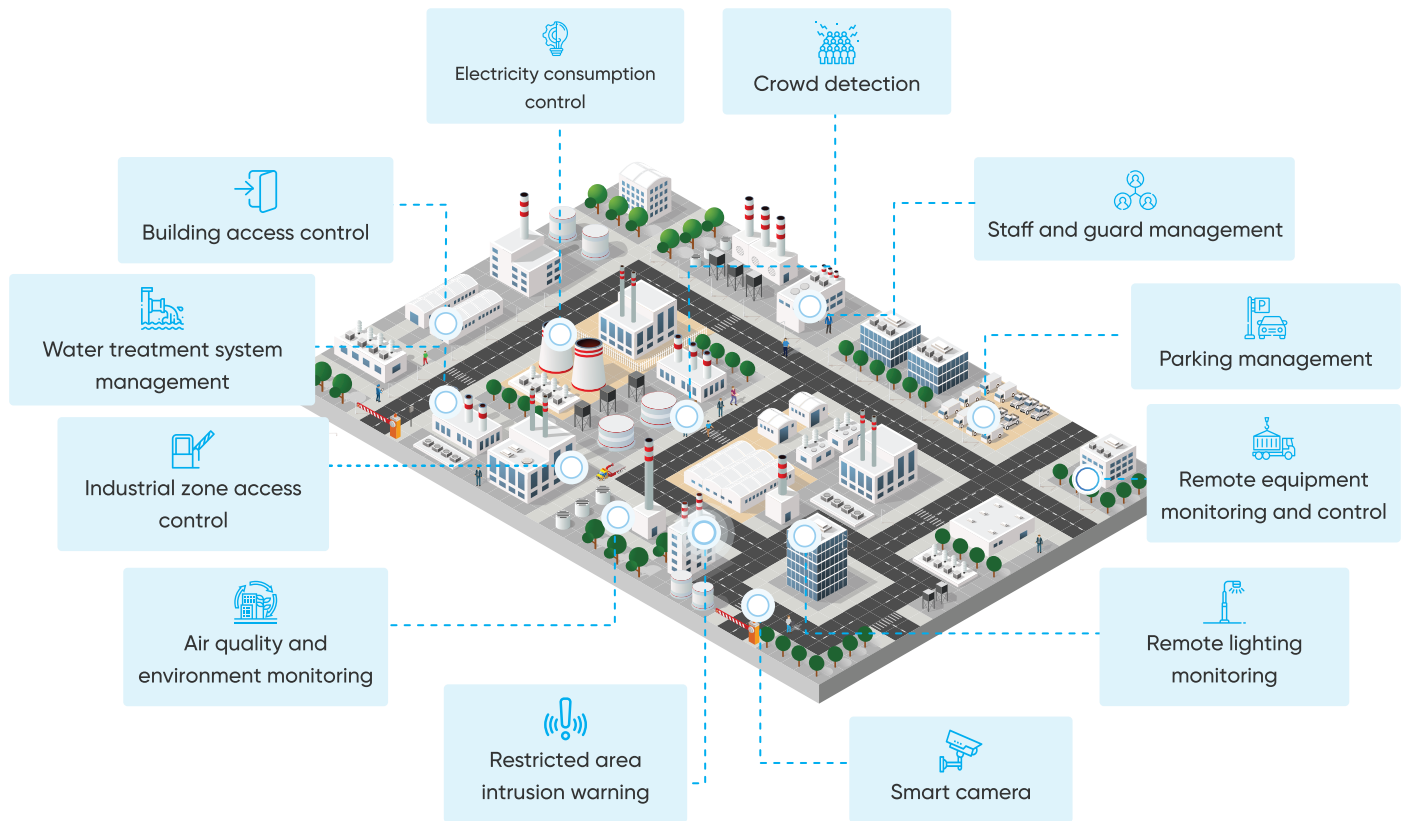
## Risk forecasting analysis

Analyze data to predict possible risks





# Smart Industrial Park



Machinery and equipment are optimized, automated and remotely controlled to reduce operating costs.



Facial recognition feature, automatic alert system prevent strangers from entering to ensure security and safety.



Container's refrigeration system is remotely controlled to reduce the risk of damaged goods



System automatically sends warnings to timely solve any problem and avoid causing damage to equipment.





# Smart Building

## Business Building



Recognize employees, customers, strangers by using FaceID to ensure security and safety of buildings.



Easily manage the list of employees, departments, customers and meetings



Employee timekeeping. Grant access permission. Manage, report the time and history of access.

## Resident Building



Smart lockers support residents when they are not available to receive delivered goods.



Support multiple building access methods: QR code, FaceID...



Track access history. Remotely open/close doors. Ensure security and safety of buildings.



Easily receive notifications from management staff (electricity, water bill...). Enhance the value of buildings.





## Case Studies

### Embedded IoT Modules & SIMs



Connect to devices & machines of IoT system such as public safety, telematics, mission-critical networking applications; rapidly provide cellular connectivity to Cloud

### Heavy Vehicle Management



Manage heavy vehicles via IoT device (Web and App). Collect data. Automatic triggering alarm based on different events. View and locate devices on Google map

### Inventory Monitoring



An energy-saving GPS tracker system. Search for assets by using the web or mobile app and get an overview of all locations with the asset map

### Mobile Access Controller - Management Centre -



A fleet management system that helps their customers in fleet planning, streamlining operations, and monitoring fleet location

### Bus Monitoring System



Monitor the location of buses in real-time, calculate the number of passengers getting on/off the bus, analyze their age and gender

### Dryer Machine Optimization



Fully automate and remotely control dryer machine. Real-time data collection. Predict relative amount of water

### Emergency Monitoring & Responding System



Allow users to receive instructions, alerts and declare alerts through screens on watches. Utilize BLE technology and the LoRa protocol for communication between the cards, devices, and the gateway to the central system.

### Air Conditioner Smart Control System



Remotely control air-conditioner and heat pump via Wi-Fi. In-built smart sensors detect surrounding temperature-humidity levels to create a proper climate for users







## Contacts

Vietnam: +84 28 3995 1060

+84 28 3995 1059

Australia: +61 411 276 342

Email: [sales@tmasolutions.com](mailto:sales@tmasolutions.com)

North America: +1 844 224 4188

Europe: +33 7 44 77 49 24

Japan: +81 50 5490 9867

Website: [www.tmasolutions.com](http://www.tmasolutions.com)

